



DATASHEET



ABOUT CAPTARIS, INC.

Captaris, Inc. is a leading provider of software products that automate business processes, manage documents electronically and provide efficient information delivery. The products of Captaris and its subsidiary Castelle, including Captaris RightFax, Captaris Workflow™, Captaris Alchemy® and the Castelle FaxPress line of products, are distributed through a global network of leading technology partners. We have customers in financial services, healthcare, government and many other industries, and our products are installed in all of the Fortune 100 and many Global 2000 companies. Headquartered in Bellevue, Washington, Captaris was founded in 1982 and is publicly traded on the NASDAQ Global Market under the symbol CAPA. For more information, please visit www.Captaris.com.

RightFax is Represented by:

©2007 All rights reserved. No part of this publication may be reproduced, transmitted, transcribed, stored in a retrieval system, or translated into any language in any form by any means without the written permission of Captaris. The following are registered trademarks and trademarks of Captaris: Captaris, Alchemy, RightFax and Captaris Workflow. FaxPress is a trademark of Castelle. All other brand names and trademarks are the property of their respective owners. MC0010029 RE1007

Captaris® RightFax® Microsoft® Exchange Module

Links the Microsoft Exchange Mail Server with Desktop Faxing and Active Directory Database Synchronization Features, Creating a Fully Unified Fax and Email Solution

OVERVIEW

Certified for Microsoft Windows 2000 and 2003, RightFax gives you all the tools you need to fax-enable desktop and business applications. The RightFax Microsoft Exchange Module is an add-on to a RightFax Server, which acts as a communication link between the RightFax Server and the Exchange Server and includes connectors for Microsoft Exchange 2003 and 2007. The Exchange Module allows users to conveniently send, receive and organize fax documents directly from Microsoft Office Outlook®. Outbound email messages addressed to the RightFax Microsoft Exchange Module are picked up by the RightFax Server, which converts them into faxes and transmits them. Incoming faxes can be routed to an email mailbox by specifying each RightFax user's mailbox information in Enterprise Fax Manager. The RightFax Microsoft Exchange Module can also provide notification of fax events via email. With the RightFax Microsoft Exchange Module, RightFax and Active Directory databases can also be synchronized. This ensures that both Active Directory and RightFax client information is consistently and correctly updated. RightFax leverages Active Directory and provides robust synchronization capabilities. User synchronization can occur from Active Directory to RightFax. With the RightFax connector for Exchange 2003, fully customizable RightFax field mappings allow administrators to perform all user maintenance from Windows by using the RightFax Snap-in for Microsoft Management Console (MMC). Users created or modified in Active Directory are automatically updated in RightFax. This not only simplifies user administration, but also ensures accuracy and consistency between servers, saving both time and resources. With the RightFax connector for Exchange 2007, extensions to the Active Directory schema are not required.

FEATURES

- Create, send, receive and manage faxes directly within Outlook; organize, forward and respond to your faxes exactly the same as email messages
- Generate and send new faxes easily to one or more contact addresses in an Outlook Contacts folder; include both fax recipients and email recipients in the same form
- Administer your RightFax and Exchange systems from a single source with automatic Microsoft Active Directory database synchronization
- Generate custom, automated notifications about sent and received faxes in Outlook
- Track inbound and outbound faxes with the Exchange Message Tracking Log
- Route undeliverable messages to defined account—according to your business processes
- Take advantage of automated redundancy and load-balancing in multiserver environments
- Use encrypted and certified document delivery from Outlook. (Requires RightFax Enterprise Suite)
- Reduce fax volume on the mail server by sending only email notification and hyperlink to access fax images stored on the RightFax Server via Web delivery feature. (Requires RightFax Web Access Module)
- Support multiple RightFax Servers with a single Exchange Server
- Connector for Exchange 2000 and 2003
- Connector for Exchange 2007
- Support for Exchange 2000, 2003 and 2007



HOW IT WORKS

Send and Receive Faxes through Outlook

With the RightFax Microsoft Exchange Module users create fax messages directly in Outlook as they would create emails. Faxes can be addressed to one or more destinations automatically using the Outlook Contacts folder, or addressed manually using a simple dialog. The module includes forms that let the users customize cover sheets, add library documents, attach billing codes and more.

Figure 1. Overview of the RightFax integration in an Microsoft Exchange environment.

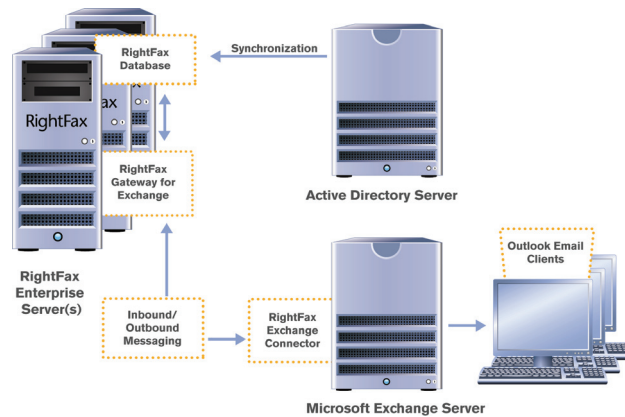
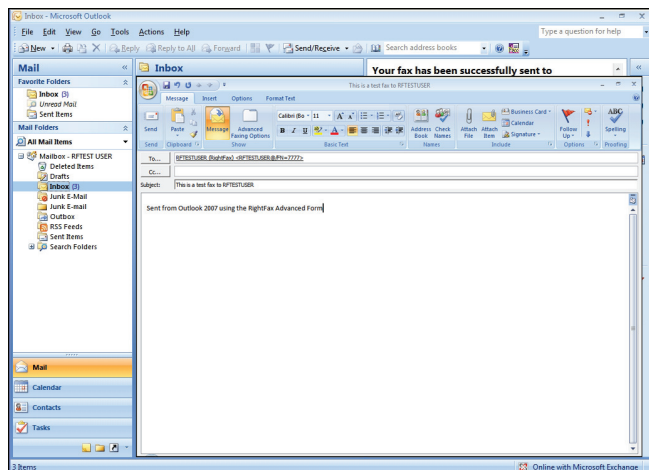
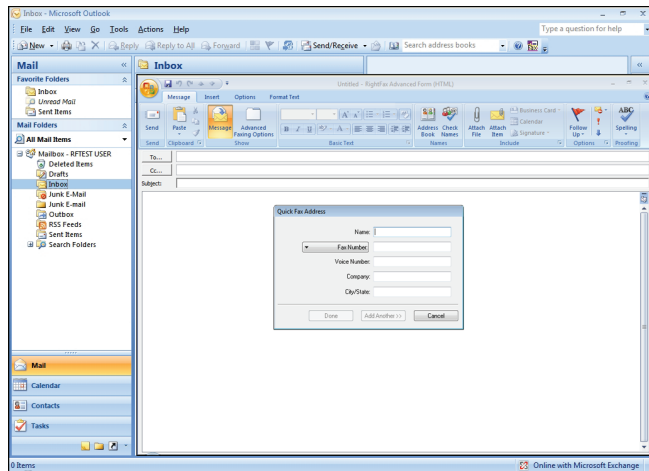


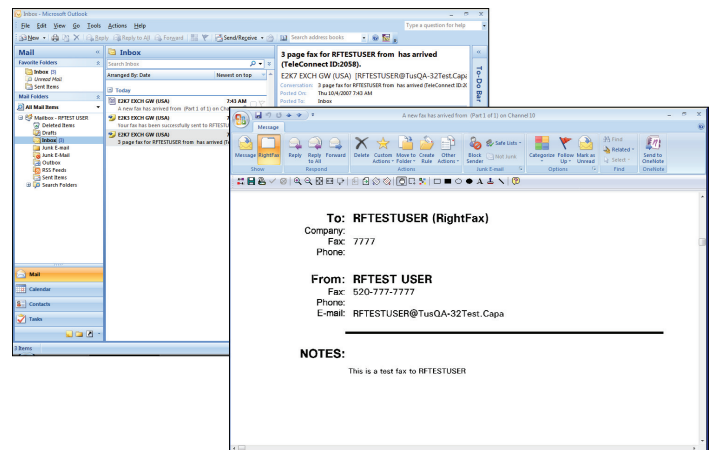
Figure 2. Sending and receiving faxes in Outlook is as easy as email.



When a user faxes a document from Outlook, the module delivers the document to the RightFax Server. RightFax renders the document to a fax format, including many native file attachments, adds a cover sheet and/or any specified library documents then transmits the document across phone lines, Local Area Network (LAN), Wide Area Network (WAN) or over the Internet.

The RightFax Microsoft Exchange Module also automatically routes incoming faxes as mail messages to Outlook mailboxes. Custom icons allow users to easily identify fax messages in their mailboxes. The fax image itself is saved in user's mail message as a file attachment. To view the fax, the user simply double-clicks the attachment icon or with the Advanced form, the fax automatically opens inside the inbox.

Figure 3. Users receive and view their faxes conveniently in Outlook.



Eliminate Fax Duplication on your Exchange Server with Web Delivery

For organizations that use the RightFax Microsoft Exchange Module to integrate fax and email functions, RightFax offers a Web delivery feature designed to off-load storage of large or high-volume fax images from the mail server.

Web delivery sends notifications of received faxes through email, but rather than attaching the actual fax image to the mail message, the RightFax Server attaches a hyperlink to the fax location on the RightFax Server. The user simply clicks the link and is taken straight to the fax image. The RightFax Web Access Module is required for this feature.

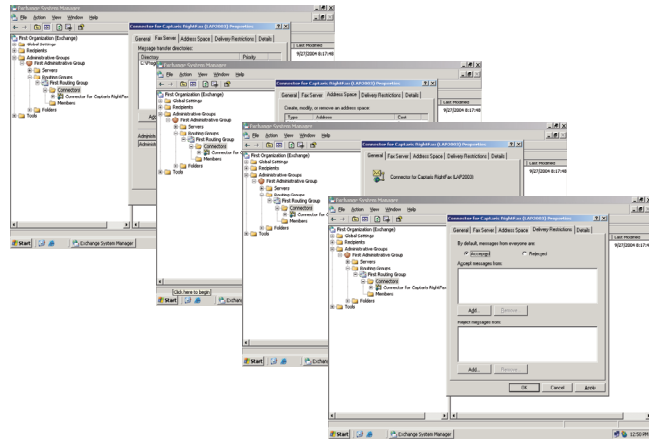
Take Advantage of Active Directory Synchronization

With the RightFax connector for Exchange 2000 and 2003, synchronization between RightFax and Active Directory links user accounts in Active Directory to corresponding user accounts in RightFax. Modifications to any Windows user automatically apply to the linked user record in RightFax. The network administrator can specify which user accounts should be synchronized, the interval between synchronization and other conditions.

To synchronize user records, each user property in Active Directory corresponds by default to a related user property in RightFax. For the RightFax connector for Exchange 2003, administrators can fully customize these associations by using the RightFax Active Directory Synchronization Snap-in for MMC.

With the RightFax connector for Exchange 2007, extensions to the Active Directory schema are not required. Directory synchronization is handled by the Captaris Synchronization Module.

Figure 4. The RightFax Snap-in for MMC provides for centralized system administration.



REQUIREMENTS

- RightFax Server with the optional RightFax Microsoft Exchange Module installed
- Exchange 2000, 2003 or 2007
- Windows client computers running Outlook 2000 SP3 or higher
- SecureDocs encrypted and certified delivery options require the RightFax Enterprise Suite

ABOUT CAPTARIS, INC.

Captaris, Inc. is a leading provider of software products that automate business processes, manage documents electronically and provide efficient information delivery. The products of Captaris and its subsidiary Castelle, including Captaris RightFax, Captaris Workflow, Captaris Alchemy and the Castelle FaxPress line of products, are distributed through a global network of leading technology partners. We have customers in financial services, healthcare, government and many other industries, and our products are installed in all of the Fortune 100 and many Global 2000 companies. Headquartered in Bellevue, Washington, Captaris was founded in 1982 and is publicly traded on the NASDAQ Global Market under the symbol CAPA. For more information, please visit www.Captaris.com.

©2007 All rights reserved. No part of this publication may be reproduced, transmitted, transcribed, stored in a retrieval system, or translated into any language in any form by any means without the written permission of Captaris. The following are registered trademarks and trademarks of Captaris: Captaris, Alchemy, RightFax and Captaris Workflow. FaxPress is a trademark of Castelle. All other brand names and trademarks are the property of their respective owners. MC0010029 RE1007